



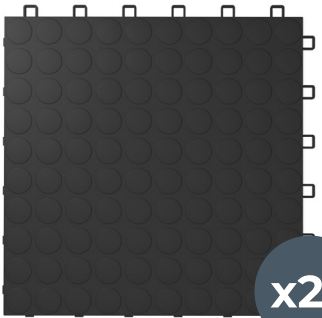
GARAGE
ROYALTY

ZOOMflor™

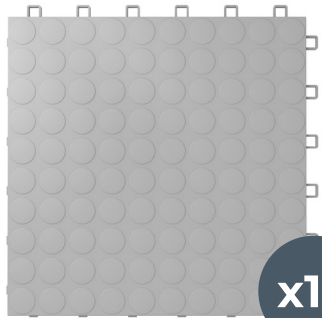
MOTORCYCLE PAD



4' x 8'



x22



x10



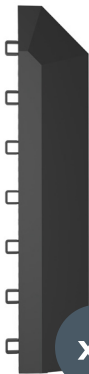
x10



x10



x2



x2

MADE IN



ZOOMflor™

www.zoomflor.com

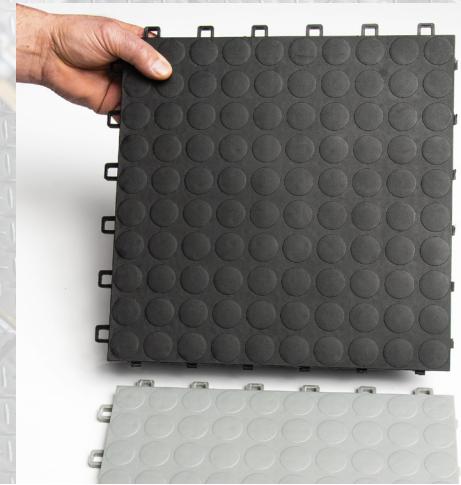
1-866-291-6982

12,000 LB WEIGHT CAPACITY

ZOOMflor™ tile system is a floating interlocking floor system, the 12" x 12" tiles are quick and easy to install.

Individual tiles are snapped together to form a continuous surface that is durable and comfortable.

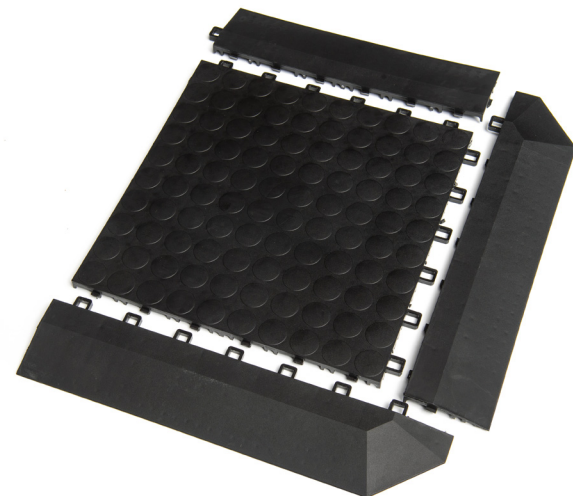
Also great for the garage, workshop, basement, cold cellar, playroom, laundry room, trade show flooring, and more!



FEATURES

- ✓ 100% Polypropylene: material used to build hockey arena boards
- ✓ Multiple colour choices - create interesting patterns & design
- ✓ Quick and easy installation
- ✓ Easy to clean and maintain
- ✓ Resistant to oil, grease, and salt
- ✓ Supports rolling loads of over 80,000 pounds
- ✓ Free-flowing underside allows water and moisture to escape
- ✓ Versatile - can be laid over old, worn, and uneven surfaces
- ✓ UV stabilized, high impact, and fade resistant
- ✓ Anti-slip
- ✓ 20-Year Limited Warranty

Quickly assemble a great looking floor
in any space!



Complete tile system includes floor tiles,
edge ramps and corners