

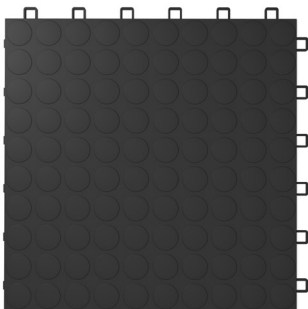


GARAGE
ROYALTY

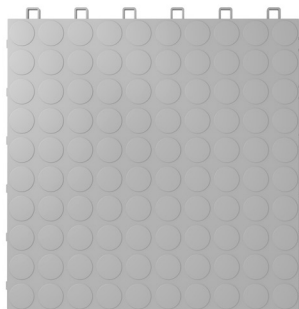


ZOOMflor™

PREMIUM FLOOR TILE



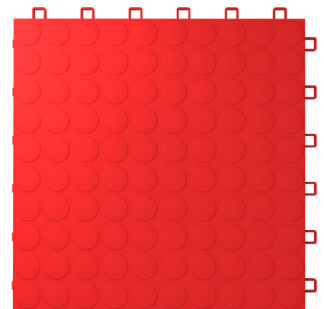
Black



Silver



White



Red



GARAGE
ROYALTY

12,000 LB/SF WEIGHT CAPACITY

ZOOMflor tile system is a floating interlocking floor system, the 12" x 12" tiles are quick and easy to install.

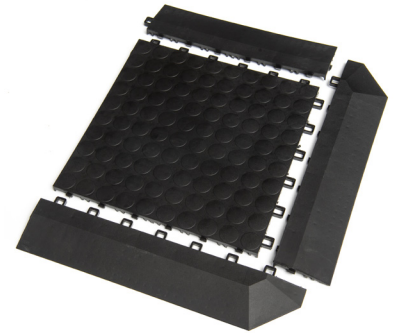
Individual tiles are snapped together to form a continuous surface that is durable and comfortable.

Great for the garage, workshop, basement, cold cellar, playroom, laundry room, trade show flooring, and more!

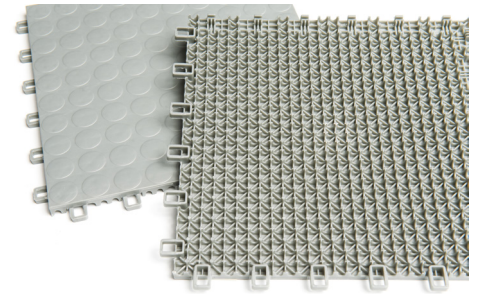
Design your own floor today by going to zoomflor.com and using our floor designer!

FEATURES

- ✓ 100% Polypropylene: material used to build hockey arena boards
- ✓ Multiple colour choices - create interesting patterns & design
- ✓ Quick and easy installation
- ✓ Easy to clean and maintain
- ✓ Resistant to oil, grease, and salt
- ✓ Supports rolling loads of over 80,000 pounds
- ✓ Free-flowing underside allows water and moisture to escape
- ✓ Versatile - can be laid over old, worn, and uneven surfaces
- ✓ UV stabilized, high impact, and fade resistant
- ✓ Anti-slip
- ✓ 20-Year Limited Warranty



Complete tile system includes floor tiles, edge ramps, and corners.



Low profile design and perforations allow for strength and drainage.



Quickly assemble a great looking floor in any space!

MADE IN



ZOOMflor™

www.zoomflor.com

1-866-291-6982